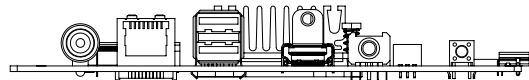
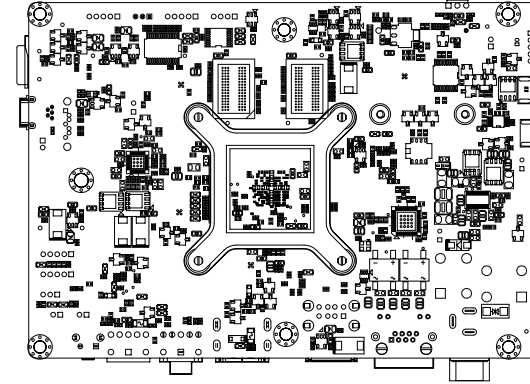
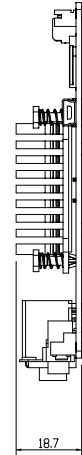
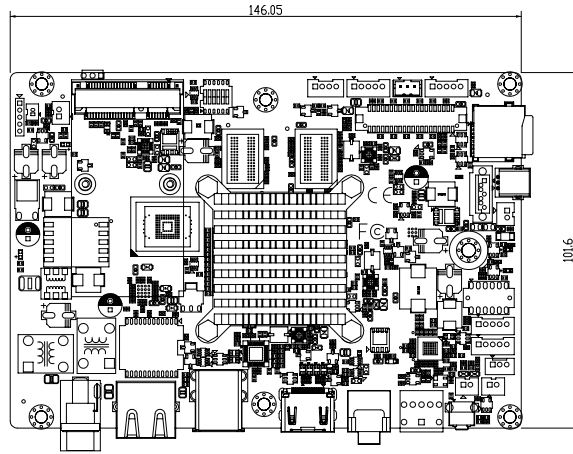
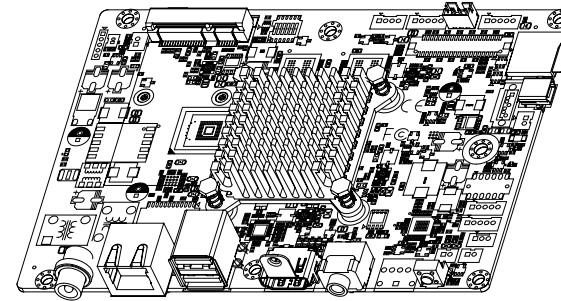
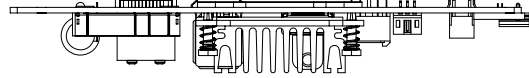


估價圖面
樣品圖面
✓ 參考圖面
承認圖面
更新圖面

表面處理	電鍍	陽極	液烤漆	粉烤漆
膜厚(mm)	0.007≤	0.015≤	0.2≤	0.3≤

扭拉力	材質	鐵件	鋁件	塑膠件
扭力值(kgf/cm)		6	4	6
拉力值(kgf)		15	8	15



Avalue	L	a	b
Vender	L	a	b
ΔE	≤1.5	-1	≤ ΔL、Δa、Δb ≤
			1

GENERAL TOL:	A	B	MATERIAL:	PART No.
>0	±0.1	±0.1	SPEC:	TASK DWG No.
>10	±0.1	±0.1	FINISH:	APPROVED
>30	±0.15	±0.1	UNIT:MM	CHECKED
>200	±0.3	±0.3	SCALE:	DESIGNED
>500	±0.5	±0.8		DRAWN
				NAME
				09_010-1030-METAL_SSSY
				MODEL No.
				RSC-M06
				REV.
				A1
				SHEET:
				1/1
				A2

