



## EMC Test Report

Model name:ACP-IMX6POS

<b>Initiated by</b>	Daniel Chou	<b>Originate Date</b>	2014/07/31
<b>Reviewed by</b>	Solo Chung	<b>Revision</b>	QD4-070 <b>Rev.A2</b>
<b>Approved by</b>	Simon Lin	<b>Release Status</b>	Preliminary

Drawings and specifications herein are property of Avalue and shall not be reproduced or copied or used without prior written

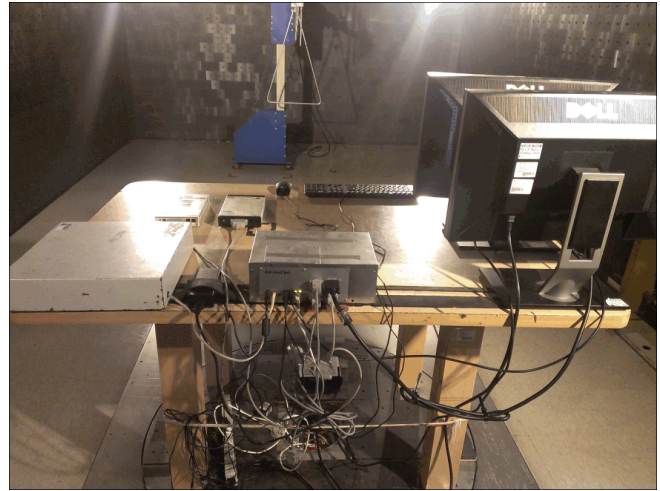
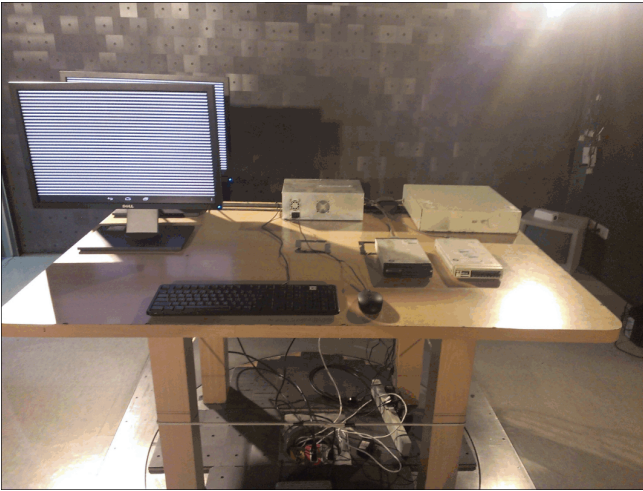
## ◆ Test Items :

	Standard	item	Result: Pass/Fail
<input checked="" type="checkbox"/>	EN55022	Radiation	Class B Pass
<input type="checkbox"/>		Conduction	
<input type="checkbox"/>		ISN	
<input type="checkbox"/>	EN61000-3-2	Harmonic	
<input type="checkbox"/>	EN61000-3-3	Flicker	
<input type="checkbox"/>	IEC61000-4-2	ESD	
<input type="checkbox"/>	IEC61000-4-3	RS	
<input type="checkbox"/>	IEC61000-4-4	EFT	
<input type="checkbox"/>	IEC61000-4-5	Surge	
<input type="checkbox"/>	IEC61000-4-6	CS	
<input type="checkbox"/>	IEC61000-4-8	MS	
<input type="checkbox"/>	IEC61000-4-11	Dip, Drop	

## ◆ Test configure:

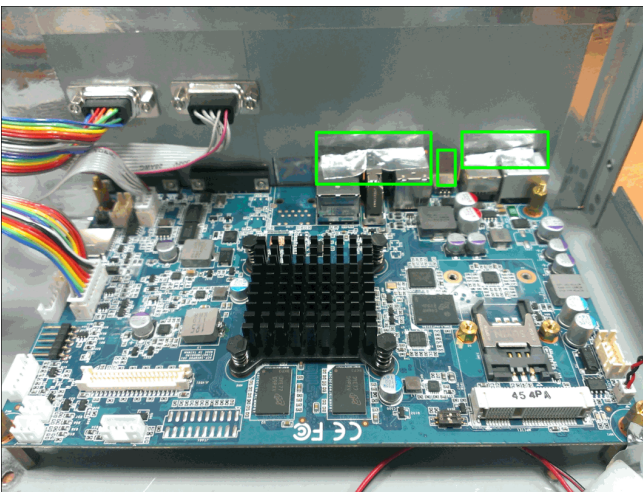
	Unit	Brand	Model	Notes
1	M/B	Avalue	ACP-IMX6POS	A01
2	CPU			
3	RAM			
4	HDD			
5	Panel			
6	Inverter			
7	Adaptor	EDAC	EA10953	
8	RF module			
9	Battery			

## ◆ Test condition:




## ◆ Solution:

各個 **I/O Port Connector** 需要加貼導電布



# ◆ Test Data:

## 1. "H" Pattern Mode



Best Testing Lab.  
&  
Neutron  
Engineering Inc.

Neutron Engineering Inc.  
B1, No.37, Lane 365, Yang-Kuang St., Nei-Hu Dis., Taipei, Taiwan 114  
Tel: 02-2657-3299 Fax: 02-2657-3331

---

Site CB03  
Limit: CISPR22 ClassB 10M Radiation  
EUT: IPC  
MN: ACP-IMX6POS  
Note: COM\*3 KEYBOARD\*1 MOUSE\*1 LAN\*1(H PATARN MODE)


Polarization: **Vertical**  
Power: AC 110V/60Hz  
Distance: 10m  
Mode: HDMI+D-SUB

Temperature: 26 °C  
Humidity: 57 %

---

### Radiated Emission Measurement

File :ACP-IMX6POS      Data :#15      Date: 2014/7/30      Time: 14:01:47



---

No.	Mk.	Freq.	Reading Level	Correct Factor	Measurement	Limit	Over	Detector	Comment
		MHz	dBuV	dB	dBuV/m	dBuV/m	dB		
1	*	30.0000	51.37	-24.05	27.32	30.00	-2.68	peak	
2		97.9000	52.53	-27.37	25.16	30.00	-4.84	peak	
3		256.9800	51.33	-20.91	30.42	37.00	-6.58	peak	
4		386.9600	49.74	-23.79	25.95	37.00	-11.05	peak	
5		774.9600	39.98	-8.91	31.07	37.00	-5.93	peak	
6		904.9400	43.16	-10.71	32.45	37.00	-4.55	peak	

---

\*:Maximum data    x:Over limit    !:over margin

●:Reference Only

File :ACP-IMX6POS\Data :#15

Page: 1

Engineer Signature: BORIS



Neutron Engineering Inc.  
B1, No.37, Lane 365, Yang-Kuang St., Nei-Hu Dis., Taipei, Taiwan 114  
Tel: 02-2657-3299 Fax: 02-2657-3331

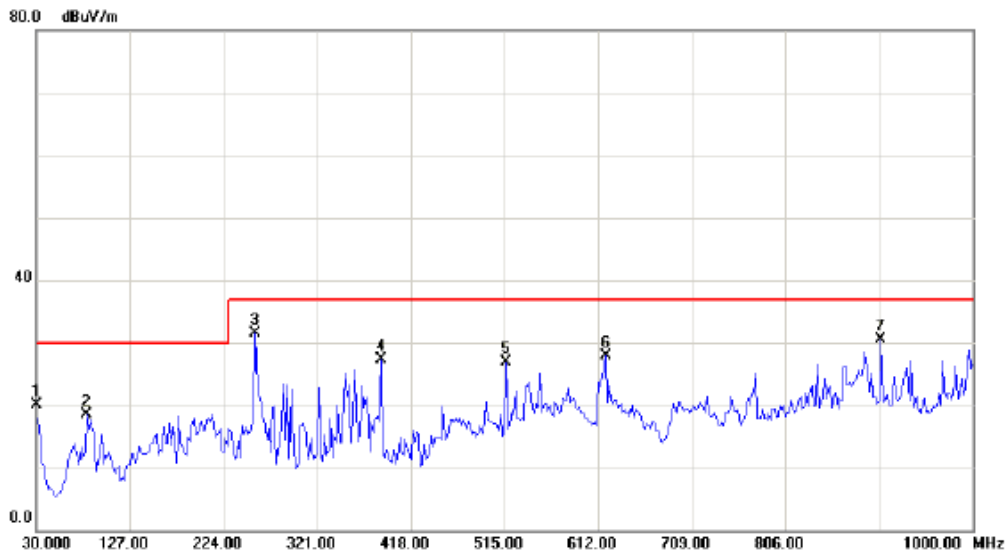
Site CB03  
Limit: CISPR22 ClassB 10M Radiation  
EUT: IPC  
MN: ACP-IMX6POS  
Note: COM\*3 KEYBOARD\*1 MOUSE\*1 LAN\*1(H PATARN MODE)

Polarization: **Horizontal**  
Power: AC 110V/60Hz  
Distance: 10m  
Mode: HDMI+D-SUB

Temperature: 26 °C  
Humidity: 57 %

**Radiated Emission Measurement**

File :ACP-IMX6POS Data :#16 Date: 2014/7/30 Time: 14:03:49



No.	Mk.	Freq.	Reading Level	Correct Factor	Measurement	Limit	Over	Detector	Comment
		MHz	dBuV	dB	dBuV/m	dBuV/m	dB		
1		30.0000	43.78	-23.63	20.15	30.00	-9.85	peak	
2		82.3800	52.04	-33.61	18.43	30.00	-11.57	peak	
3	*	256.9800	52.79	-21.21	31.58	37.00	-5.42	peak	
4		386.9600	48.94	-21.54	27.40	37.00	-9.60	peak	
5		516.9400	43.63	-16.76	26.87	37.00	-10.13	peak	
6		619.7600	39.96	-11.97	27.99	37.00	-9.01	peak	
7		904.9400	42.23	-11.65	30.58	37.00	-6.42	peak	

\*:Maximum data x:Over limit !:over margin ●Reference Only

## 2. SD Read(播放影片) Mode



Best Testing Lab.  
&  
Neutron  
Engineering Inc.

Neutron Engineering Inc.  
B1, No.37, Lane 365, Yang-Kuang St., Nei-Hu Dis., Taipei, Taiwan 114  
Tel: 02-2657-3299 Fax: 02-2657-3331

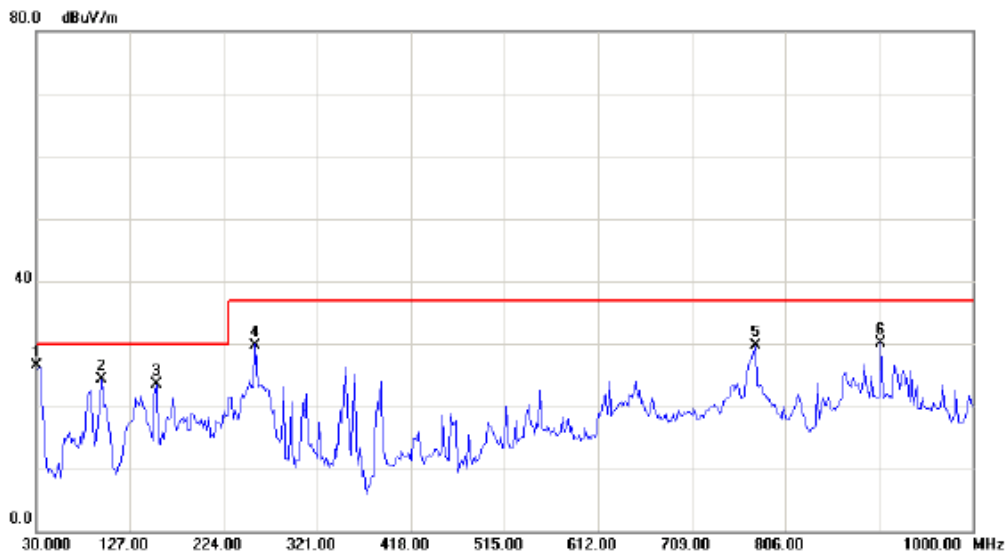
Site CB03  
Limit: CISPR22 ClassB 10M Radiation  
EUT: IPC  
MN: ACP-IMX6POS  
Note: COM\*3 KEYBOARD\*1 MOUSE\*1 LAN\*1(SD MODE)

Polarization: **Vertical**  
Power: AC 110V/60Hz  
Distance: 10m  
Mode: HDMI+D-SUB

Temperature: 26 °C  
Humidity: 57 %

### Radiated Emission Measurement

File :ACP-IMX6POS Data :#19 Date: 2014/7/30 Time: 14:12:44



No.	Mk.	Freq. MHz	Reading Level dBuV	Correct Factor dB	Measure- ment dBuV/m	Limit dBuV/m	Over dB	Detector	Comment
1	*	30.0000	50.48	-24.05	26.43	30.00	-3.57	peak	
2		97.9000	51.59	-27.37	24.22	30.00	-5.78	peak	
3		154.1600	50.75	-27.16	23.59	30.00	-6.41	peak	
4		256.9800	50.71	-20.91	29.80	37.00	-7.20	peak	
5		774.9600	38.53	-8.91	29.62	37.00	-7.38	peak	
6		904.9400	40.72	-10.71	30.01	37.00	-6.99	peak	

\*:Maximum data x:Over limit !:over margin •Reference Only

File :ACP-IMX6POS\Data :#19

Page: 1

Engineer Signature: BORIS



Neutron Engineering Inc.  
B1, No.37, Lane 365, Yang-Kuang St., Nei-Hu Dis., Taipei, Taiwan 114  
Tel: 02-2657-3299 Fax: 02-2657-3331

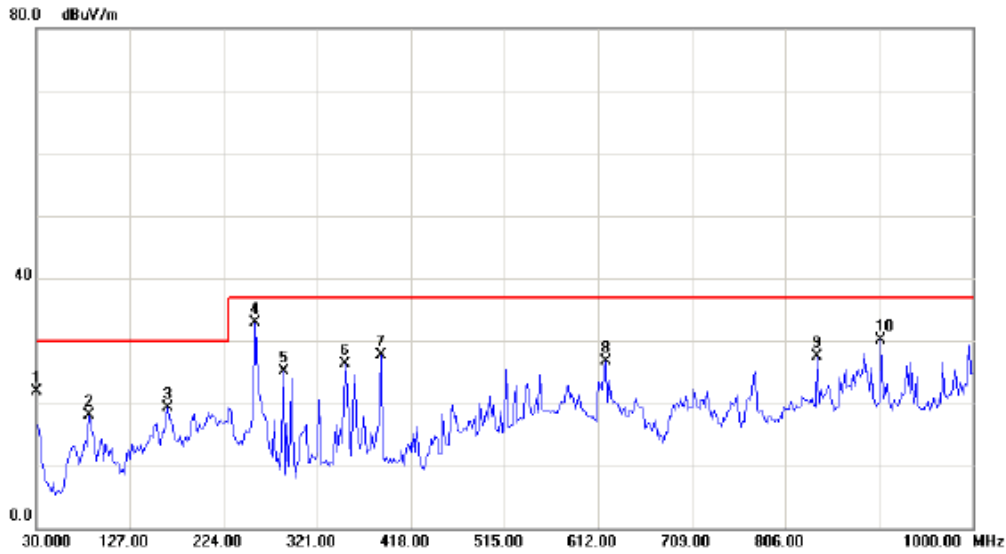
Site CB03  
Limit: CISPR22 ClassB 10M Radiation  
EUT: IPC  
MN: ACP-IMX6POS  
Note: COM\*3 KEYBOARD\*1 MOUSE\*1 LAN\*1(SD MODE)

Polarization: *Horizontal*  
Power: AC 110V/60Hz  
Distance: 10m  
Mode: HDMI+D-SUB

Temperature: 26 °C  
Humidity: 57 %

**Radiated Emission Measurement**

File :ACP-IMX6POS Data :#20 Date: 2014/7/30 Time: 14:14:45



No. Mk.	Freq. MHz	Reading Level dBuV	Correct Factor dB	Measurement dBuV/m	Limit dBuV/m	Over dB	Detector	Comment
1	30.0000	45.52	-23.63	21.89	30.00	-8.11	peak	
2	84.3200	51.52	-33.44	18.08	30.00	-11.92	peak	
3	165.8000	47.16	-27.90	19.26	30.00	-10.74	peak	
4 *	256.9800	54.09	-21.21	32.88	37.00	-4.12	peak	
5	286.0800	52.09	-26.93	25.16	37.00	-11.84	peak	
6	350.1000	49.63	-23.24	26.39	37.00	-10.61	peak	
7	386.9600	49.16	-21.54	27.62	37.00	-9.38	peak	
8	619.7600	38.60	-11.97	26.63	37.00	-10.37	peak	
9	838.9800	40.02	-12.46	27.56	37.00	-9.44	peak	
10	904.9400	41.84	-11.65	30.19	37.00	-6.81	peak	

\*:Maximum data x:Over limit !:over margin ●Reference Only



### 3. LAN (對 Ping)Mode



Best Testing Lab.  
&  
Neutron  
Engineering Inc.

Neutron Engineering Inc.  
B1, No.37, Lane 365, Yang-Kuang St., Nei-Hu Dis., Taipei, Taiwan 114  
Tel: 02-2657-3299 Fax: 02-2657-3331

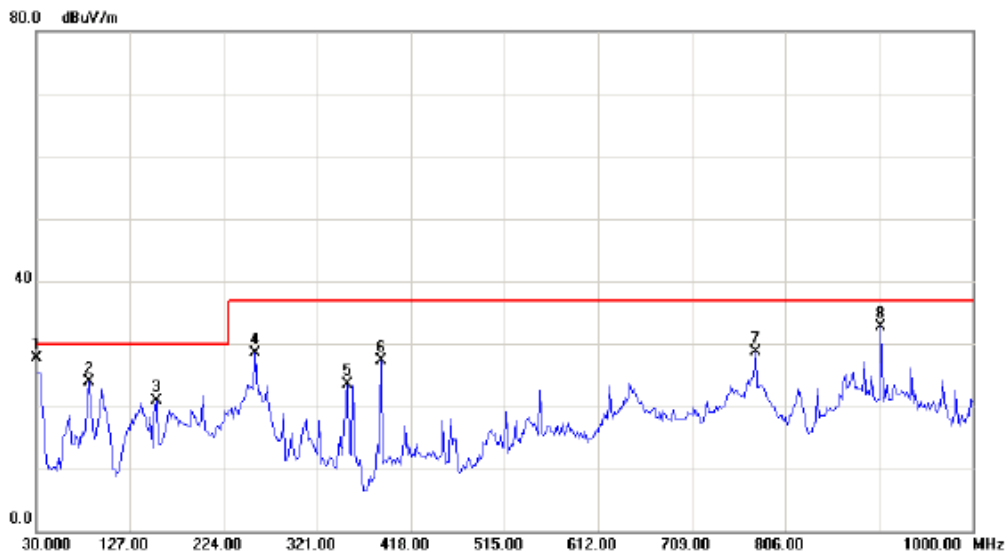
Site CB03  
Limit: CISPR22 ClassB 10M Radiation  
EUT: IPC  
MN: ACP-IMX6POS  
Note: COM\*3 KEYBOARD\*1 MOUSE\*1 LAN\*1(LAN MODE)

Polarization: **Vertical**  
Power: AC 110V/60Hz  
Distance: 10m  
Mode: HDMI+D-SUB

Temperature: 26 °C  
Humidity: 57 %

#### Radiated Emission Measurement

File :ACP-IMX6POS Data :#17 Date: 2014/7/30 Time: 14:07:20



No.	Mk.	Freq. MHz	Reading Level dBuV	Correct Factor dB	Measure- ment dBuV/m	Limit dBuV/m	Over dB	Detector	Comment
1	*	30.0000	51.66	-24.05	27.61	30.00	-2.39	peak	
2		84.3200	52.81	-28.90	23.91	30.00	-6.09	peak	
3		154.1600	48.16	-27.16	21.00	30.00	-9.00	peak	
4		256.9800	49.47	-20.91	28.56	37.00	-8.44	peak	
5		352.0400	46.72	-23.15	23.57	37.00	-13.43	peak	
6		386.9600	51.16	-23.79	27.37	37.00	-9.63	peak	
7		774.9600	37.67	-8.91	28.76	37.00	-8.24	peak	
8		904.9400	43.44	-10.71	32.73	37.00	-4.27	peak	

\*:Maximum data x:Over limit !:over margin •Reference Only

File :ACP-IMX6POS\Data :#17

Page: 1

Engineer Signature: BORIS





Neutron Engineering Inc.  
B1, No.37, Lane 365, Yang-Kuang St., Nei-Hu Dis., Taipei, Taiwan 114  
Tel: 02-2657-3299 Fax: 02-2657-3331

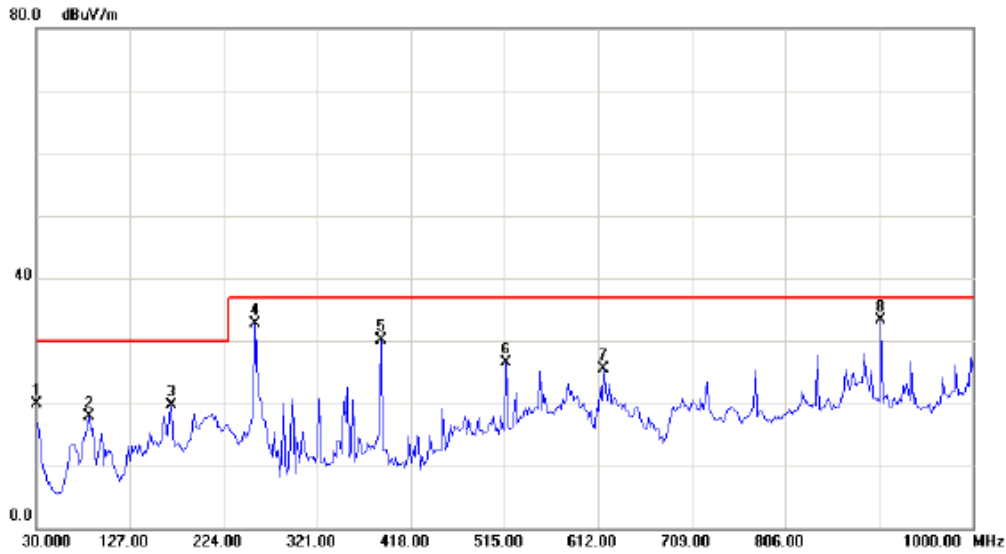
Site CB03  
Limit: CISPR22 ClassB 10M Radiation  
EUT: IPC  
MN: ACP-IMX6POS  
Note: COM\*3 KEYBOARD\*1 MOUSE\*1 LAN\*1(LAN MODE)

Polarization: **Horizontal**  
Power: AC 110V/60Hz  
Distance: 10m  
Mode: HDMI+D-SUB

Temperature: 26 °C  
Humidity: 57 %

**Radiated Emission Measurement**

File :ACP-IMX6POS Data :#18 Date: 2014/7/30 Time: 14:09:19



No.	Mk.	Freq.	Reading Level	Correct Factor	Measurement	Limit	Over	Detector	Comment
		MHz	dBuV	dB	dBuV/m	dBuV/m	dB		
1		30.0000	43.53	-23.63	19.90	30.00	-10.10	peak	
2		84.3200	51.29	-33.44	17.85	30.00	-12.15	peak	
3		169.6800	47.54	-27.92	19.62	30.00	-10.38	peak	
4		256.9800	53.91	-21.21	32.70	37.00	-4.30	peak	
5		386.9600	51.73	-21.54	30.19	37.00	-6.81	peak	
6		516.9400	43.32	-16.76	26.56	37.00	-10.44	peak	
7		617.8200	38.38	-12.83	25.55	37.00	-11.45	peak	
8	*	904.9400	44.99	-11.65	33.34	37.00	-3.66	peak	

\*:Maximum data x:Over limit !:over margin ●Reference Only